



CorePro LED PLC 4P



CorePro LED PLC 9W 840 4P G24q-3

The CorePro LED PLC 4P integrates a LED light source into a traditional fluorescent form factor. This product is the ideal solution for uplamping in general lighting applications: it meets basic lighting requirements, offers significant energy savings, and is environmentally friendly.

Product data

General information	
Cap-Base	G24Q-3 [G24q-3]
CE mark	Yes
EU RoHS compliant	Yes
Nominal Lifetime (Nom)	30000 h
Switching Cycle	50000
Flux measurement reference	Sphere
Tier	CorePro
Light technical	
Color Code	840 [CCT of 4000K]
Beam Angle (Nom)	120 °
Luminous Flux (Nom)	1000 lm
Color Designation	Cool White (CW)
Correlated Color Temperature (Nom)	4000 K
Luminous Efficacy (rated) (Nom)	100.00 lm/W
Color Consistency	<6
Color Rendering Index (Nom)	83
LLMF At End Of Nominal Lifetime (Nom)	70 %
Operating and electrical	
Input Frequency	30000-80000 Hz
Power (Nom)	9 W

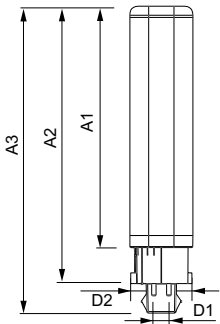
Lamp Current (Max)	400 mA
Lamp Current (Min)	250 mA
Starting Time (Nom)	0.5 s
Warm Up Time to 60% Light (Nom)	0.5 s
Power Factor (Nom)	0.9
Voltage (Nom)	20-50 V
Temperature	
T-Ambient (Max)	35 °C
T-Ambient (Min)	-20 °C
T-Storage (Max)	65 °C
T-Storage (Min)	-40 °C
T-Case Maximum (Nom)	76 °C
Controls and dimming	
Dimmable	No
Mechanical and housing	
Product Length	200 mm
Bulb Shape	Tube, single-ended
Approval and application	
Energy Efficiency Class	F

CorePro LED PLC 4P

Energy Saving Product	Yes
Approval Marks	TUV CE marking RoHS compliance KEMA Keur certificate
Energy Consumption kWh/1000 h	9 kWh
EPREL Registration Number	403551
Product data	
Full product code	871869654117300
Order product name	CorePro LED PLC 9W 840 4P G24q-3

EAN/UPC - Product	8718696541173
Order code	929001200902
Numerator - Quantity Per Pack	1
Local code description	CorePro LED PLC 9W 840 4P G24q-3
Numerator - Packs per outer box	10
Material Nr. (12NC)	929001200902
Net Weight (Piece)	0.088 kg

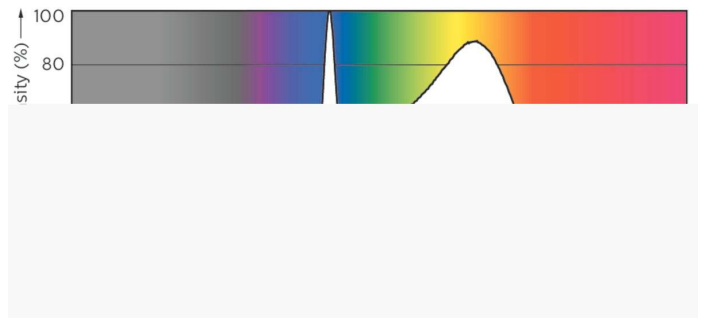
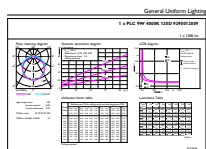
Dimensional drawing



CorePro LED PLC 9W 840 4P G24q-3

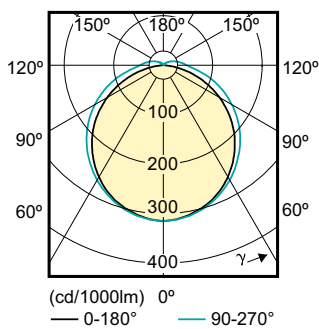
Product	D1	D2	A1	A2	A3
CorePro LED PLC 9W 840 4P G24q-3	24.3 mm	28.4 mm	128.8 mm	148 mm	163.6 mm

Photometric data



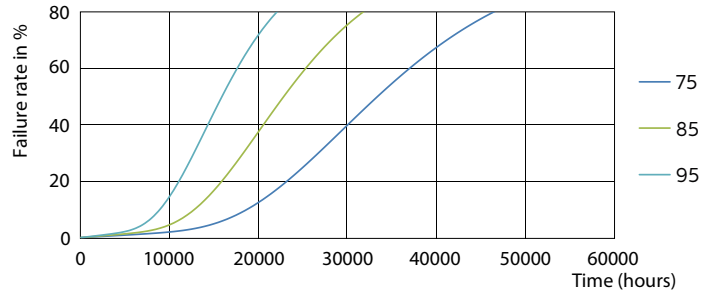
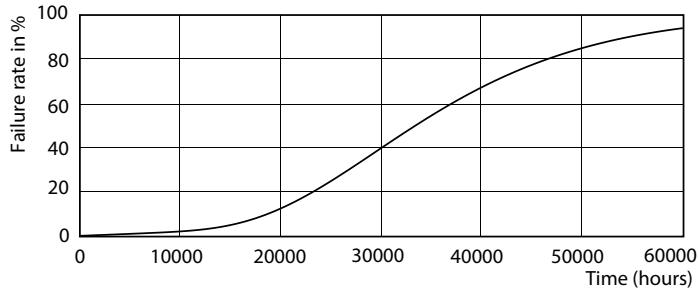
LEDtube PLC 100mm 9W G24Q-3 840 1000lm

LEDtube PLC 100mm 9W G24Q-3 840 1000lm

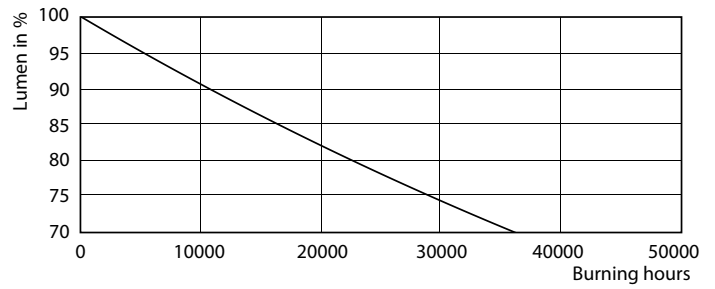
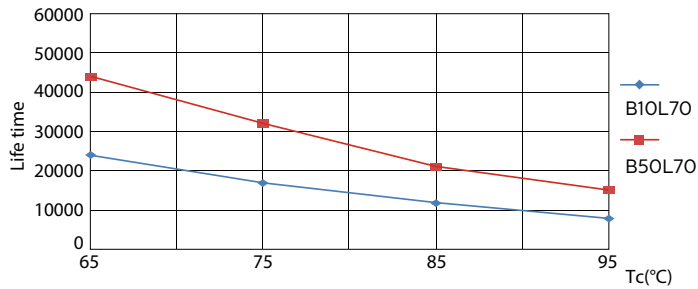


CorePro LED PLC 4P

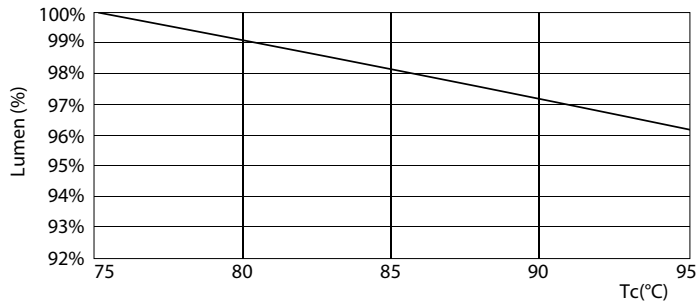
Lifetime



LEDtube PLC 100mm 9W G24Q-3 830 950lm



LEDtube PLC 100mm 9W G24Q-3 830 950lm



LEDtube PLC 100mm 9W G24Q-3 830 950lm

CorePro LED PLC 4P

