

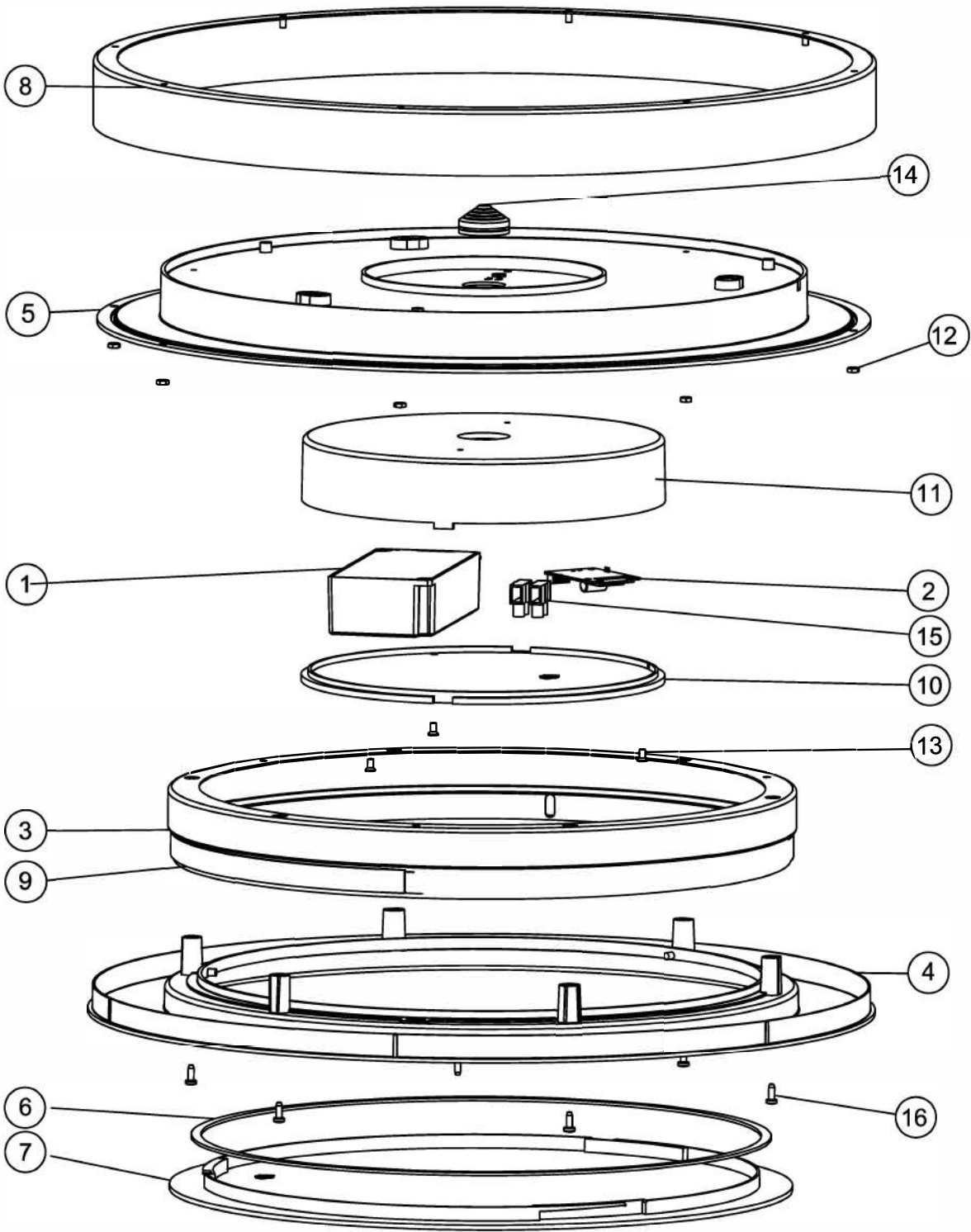
Warnings

Always make sure the luminaire is detached from the mains socket
Always make sure the DC cable is detached from the power supply
Staring at the operating light source may cause eye injury

| # | Disassemble/dismantle steps | Tools needed |
|---|--|--------------|
| a | Remove Front ring [7] from Diffuser [4] | |
| b | Unscrew 6pcs Screws [16] and remove Diffuser [4] from Upper diffuser [5] | screwdriver |
| c | Unscrew 3pcs Screws [13] and remove Mounting ring [3] from Upper diffuser [5] | screwdriver |
| d | Unscrew 3pcs Screws [13] and remove Junction box cover [10] from Junction box [11] | screwdriver |
| e | Unscrew 2pcs Screws and remove Hue Connect [2] from Junction box [11] | screwdriver |
| f | Remove Driver [1] from Junction box [11] | |
| g | Remove LED strip [9] from Mounting ring [3] | |

| # | COMPONENT | QTY |
|----|--------------------|-----|
| 1 | Driver | 1 |
| 2 | Hue Connect | 1 |
| 3 | Mounting ring | 1 |
| 4 | Diffuser | 1 |
| 5 | Upper diffuser | 1 |
| 6 | Water proof ring | 1 |
| 7 | Front ring | 1 |
| 8 | Outer ring | 1 |
| 9 | LED strip | 1 |
| 10 | Junction box cover | 1 |
| 11 | Junction box | 1 |
| 12 | NUT | 8 |
| 13 | Screw | 3 |
| 14 | Water proof plug | 1 |
| 15 | Terminal block | 1 |
| 16 | Screw | 6 |

* FOR LIGHT SOURCE-LED STRIP REMOVAL PLEASE SEE DOCUMENT
442295215544_L2 Removal and Test Instnction Flex LED Strip



| | | | | | |
|------------|--|-----------------|-----------|------|------------|
| STATUS | DESCRIPTION 929003056701 Adore Hue ceiling lamp chrome 1x27W 24V | | DESIGN ID | | 2021-09-02 |
| | | | DOC 12NC | | |
| | | | | | |
| NAME Li Ba | | LOCAL PART ID | | A3-L | |
| CHECKED | | DATE 2021-09-02 | | | |