

GEWISS

CHORUS SMART

HOME GATEWAY APP



User's Guide

CHORUS SMART

INDEX

1. PURPOSE OF DOCUMENT	3
2. GENERAL DESCRIPTION	3
3. APP INSTALLATION	4
3.1. REQUIREMENTS.....	4
3.2. INSTALLATION	4
3.3. ANDROID DEVICES.....	5
3.4. IOS DEVICES.....	6
4. APP LAUNCHING AND PLANT SUPERVISION	7
4.1. LOGGING IN AND CREATING A NEW USER.....	7
4.2. SUPERVISION OF AN EXISTING PLANT	8
4.3. PLANT SELECTION.....	10
5. APP MENU DESCRIPTION	11
5.1. SETTING UP A NEW HOME (CREATE NEW PLANT)	11
5.2. HOME MANAGEMENT (ADDING DEVICES)	16
5.3. CUSTOMISING SCENES	18
5.4. NOTICE MANAGEMENT	19
5.5. USERS MANAGEMENT	20
6. ISSUES AND RESOLUTION	21
6.1. USING ONLINE HELP	21
6.2. REQUEST FOR TECHNICAL SUPPORT.....	22

CHORU **S** MART

1. PURPOSE OF DOCUMENT

The purpose of this guide is to explain, in summary form, how to install the Home Gateway App on your mobile device and to provide a general overview of its essential functions.

At gewiss.com you can find all the information and technical data on the products that compose the ChoruSmart home automation system and download dedicated documentation.

2. GENERAL DESCRIPTION

The Home Gateway App enables the installation, configuration, monitoring and operation of the home automation system based on the Zigbee communication protocol. The App can be installed on mobile devices (smartphones, tablets) and must be used in conjunction with the GW1X840 Home Gateway and ChoruSmart products.

3. APP INSTALLATION

3.1. REQUIREMENTS

Available for both Android and iOS mobile devices, the App supports operating systems from the following versions:

- Android 4.4 (or higher)
- iOS 11 (or higher)

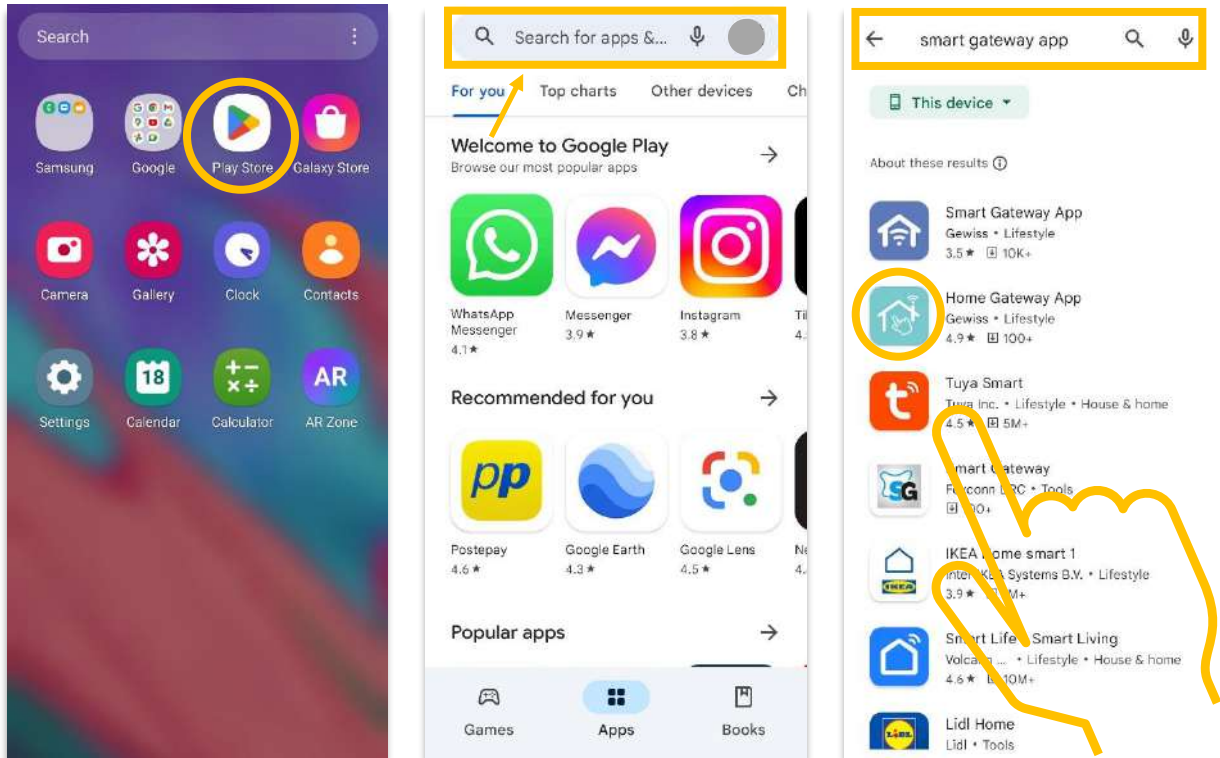
3.2. INSTALLATION


The Home Gateway App can be downloaded free of charge via the Play Store or App Store depending on your operating system. Below is a step-by-step guide on how to do this.

CHORUS SMART

3.3. ANDROID DEVICES

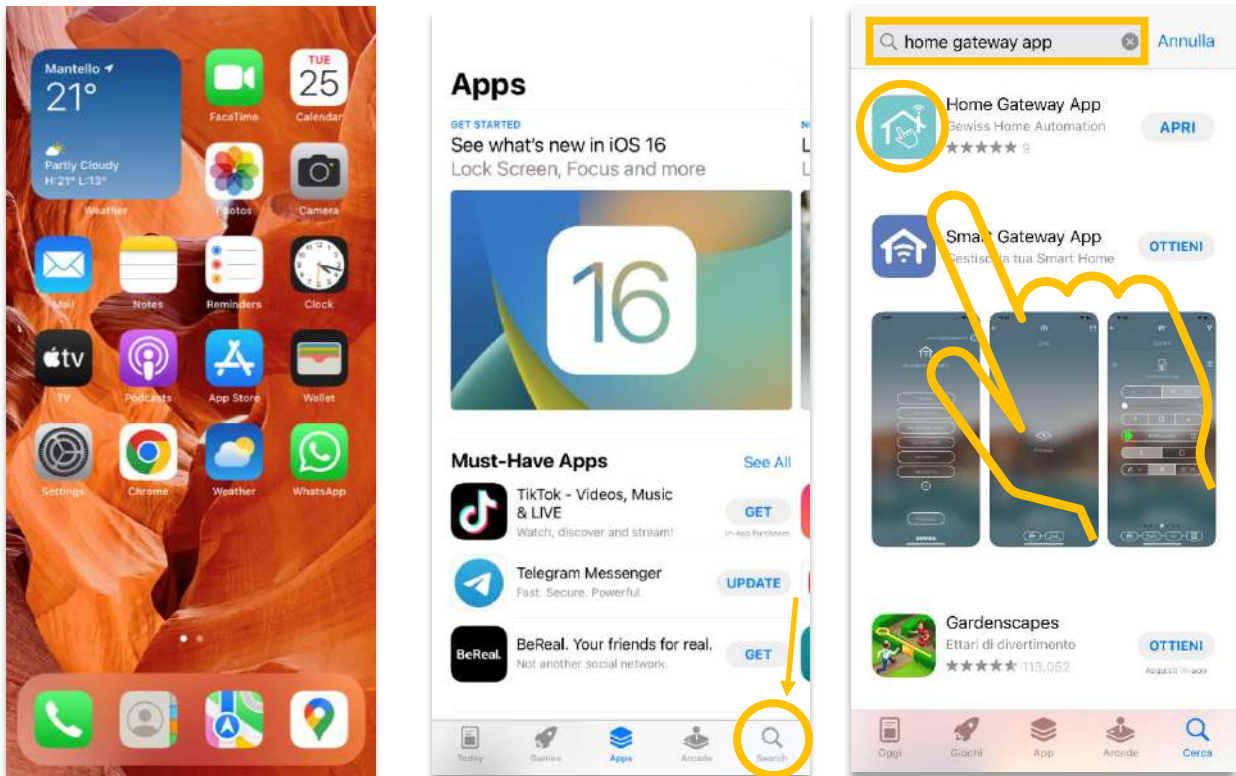
- On your mobile device, search for the “Play Store” application and launch it:




- Enter: “Home Gateway App” in the search bar;
- Select the following icon  and proceed with the installation.

3.4. IOS DEVICES

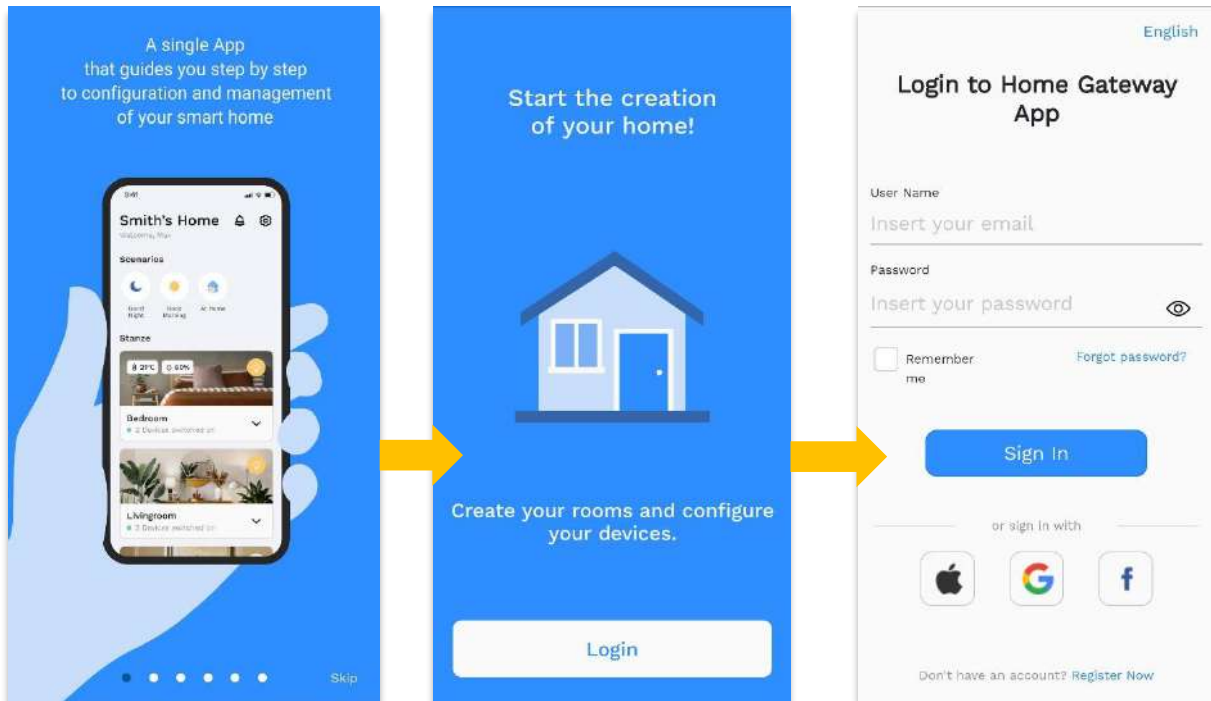
- On your mobile device, search for the “Play Store” application and launch it:



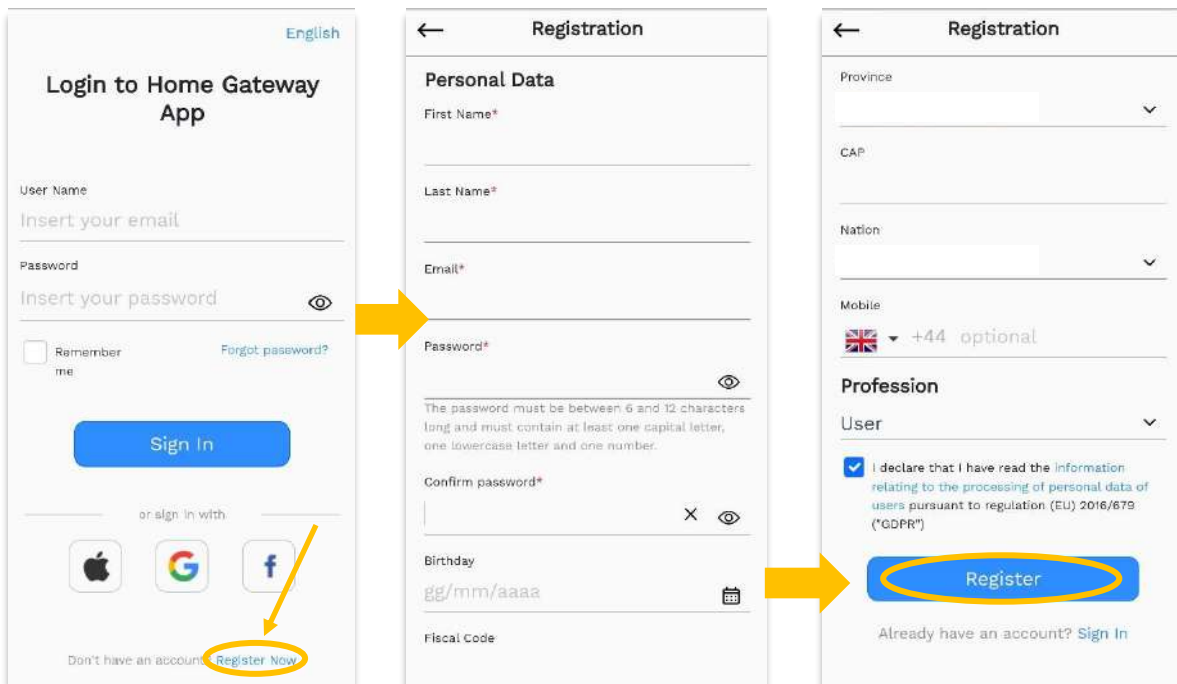
- Enter: “Home Gateway App” in the search bar;
- Select the following icon  and proceed with the installation.

4. APP LAUNCHING AND PLANT SUPERVISION

4.1. LOGGING IN AND CREATING A NEW USER



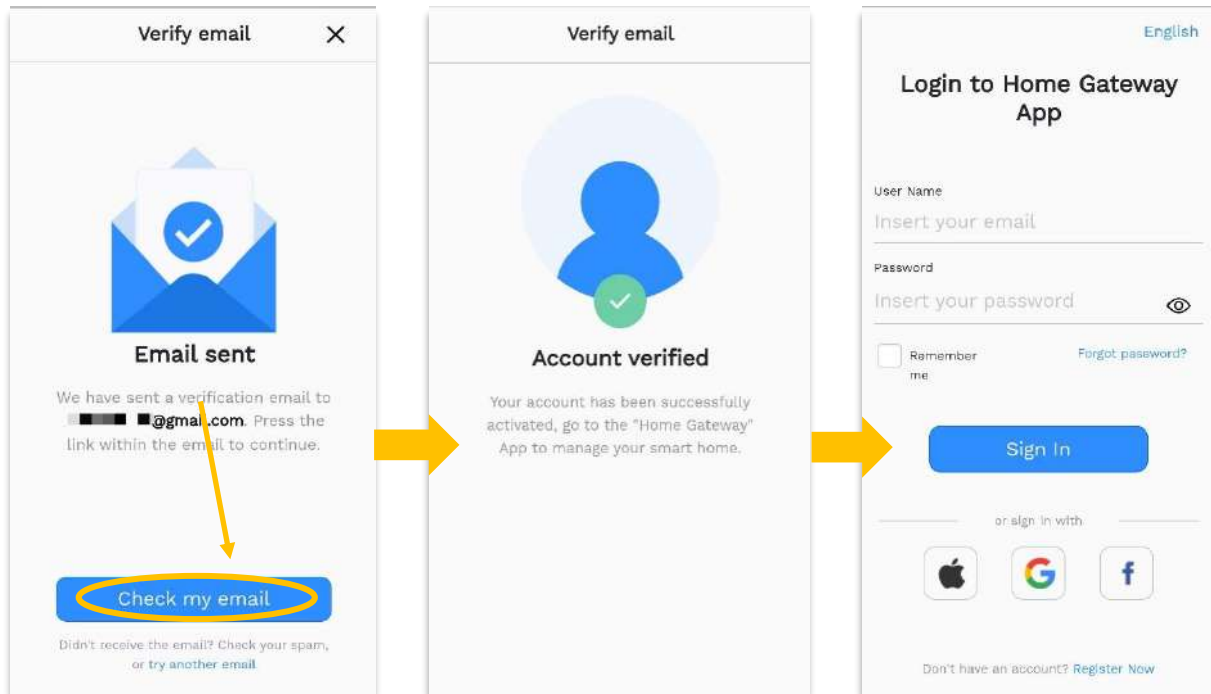
After the introductory sequence and the *login* screen with the entry of credentials, it will be possible to log in. To create a *new user*, click on the link at the bottom of the page and follow the registration procedure:



Once you have filled in the various fields with your personal data and contact details, click on the “Register” button. To complete the procedure, you will need to confirm

CHORUS SMART

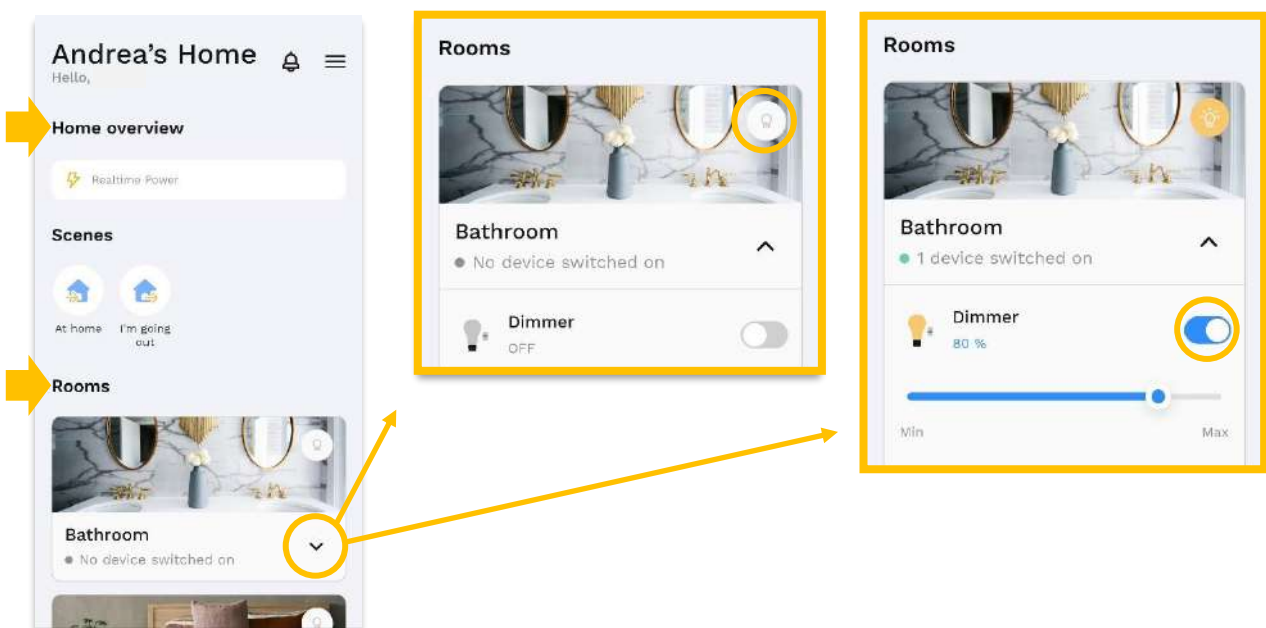
receipt of the e-mail by clicking on the link received. From now on, your credentials will be active and can be used to log in to the App.



4.2. SUPERVISION OF AN EXISTING PLANT

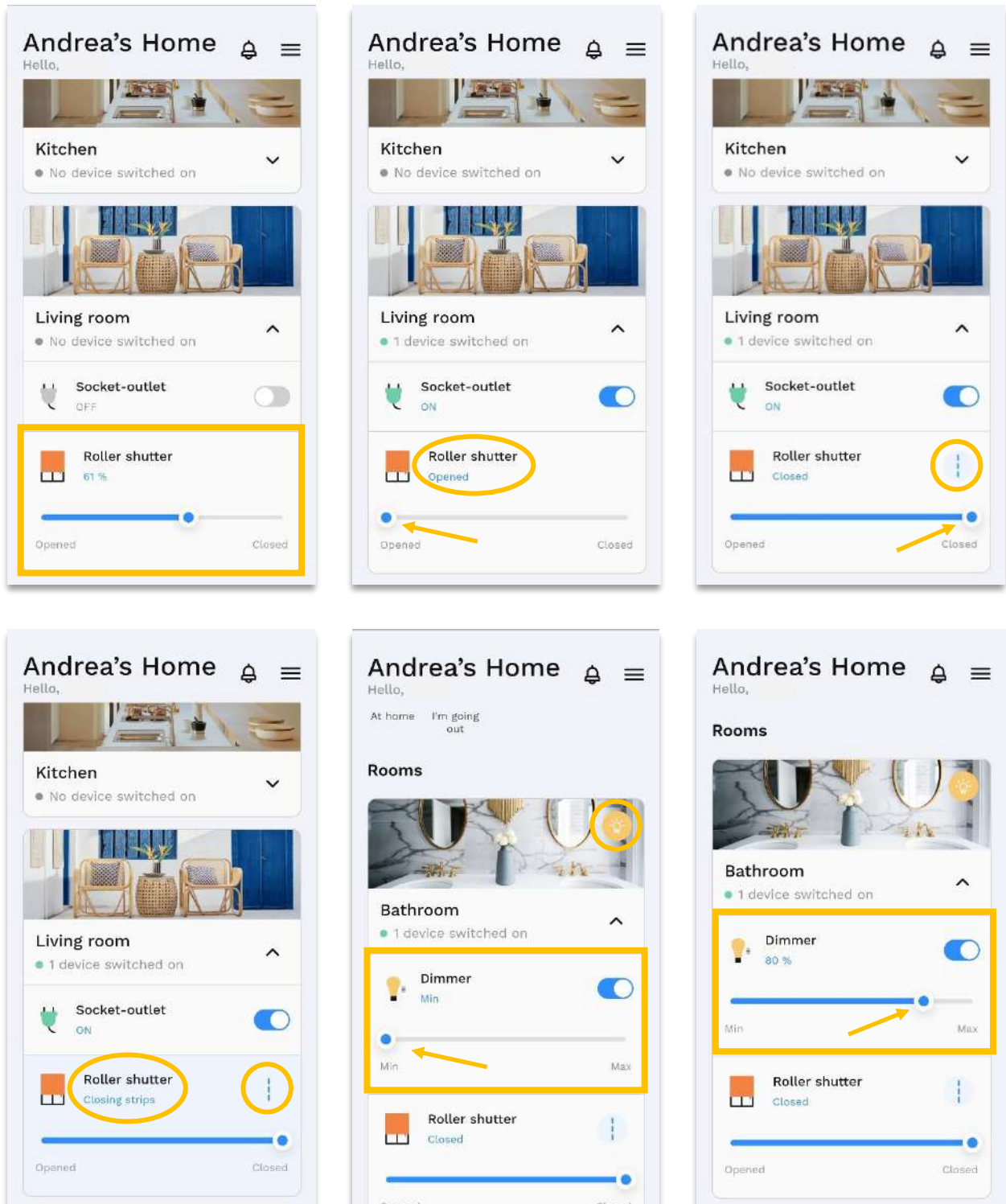
After logging in, you land on the *dashboard* (page) controlling all functions, where you can view:

- The “Home overview” with the instantaneous consumption of the system;
- The “Scenes”, i.e. a group of preconfigured actions and/or commands;
- The detail of the “Rooms”, e.g. bathroom, living room, bedroom, etc.



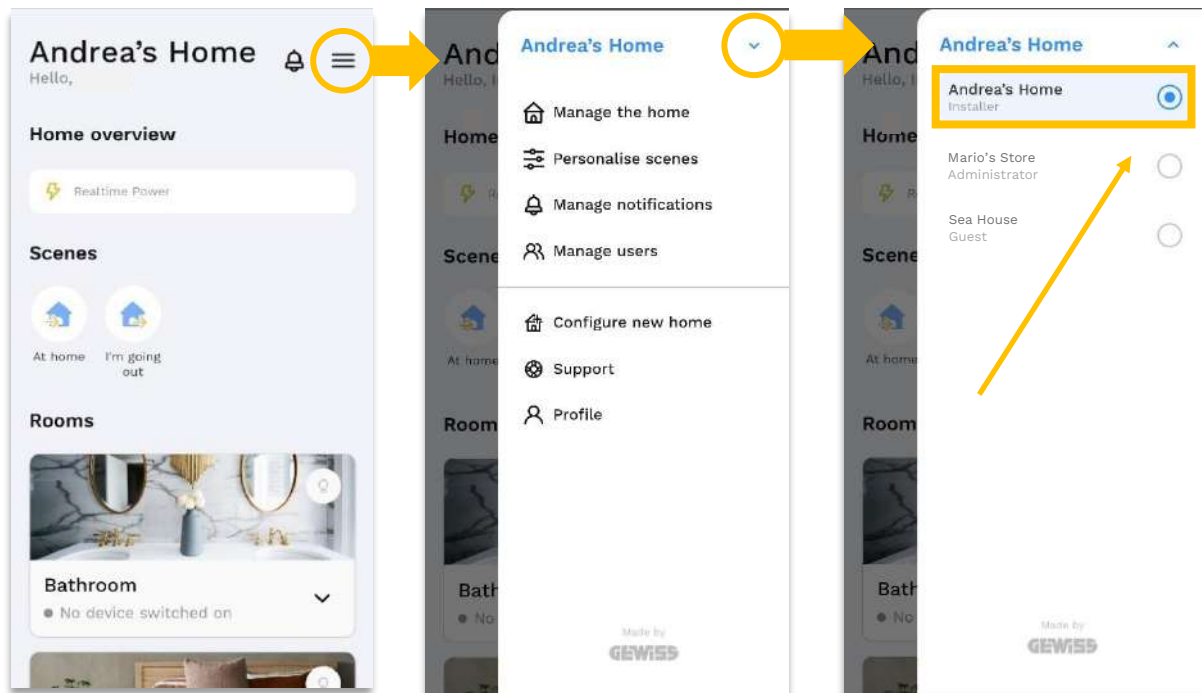
CHORUS SMART

Within a room, it will be possible to manage in detail both the individual control, e.g. lights, shutters and dimmers, and the general control of all lights in the room via the relevant 'light bulb icon' at the top right (see images). A specific icon and control will be displayed for each device type. The dimmer, for example, will allow you to adjust the light intensity at will but not display the consumption data, while for the shutters you will have, in addition to the slider to open and close them, also the button to manage the slats.



4.3. PLANT SELECTION

To access the different installations for which you have access (by invitation from the owner or installer) simply click on the menu icon (hamburger button) in the top right-hand corner and then on the arrow, selecting from those available, as in the example below:



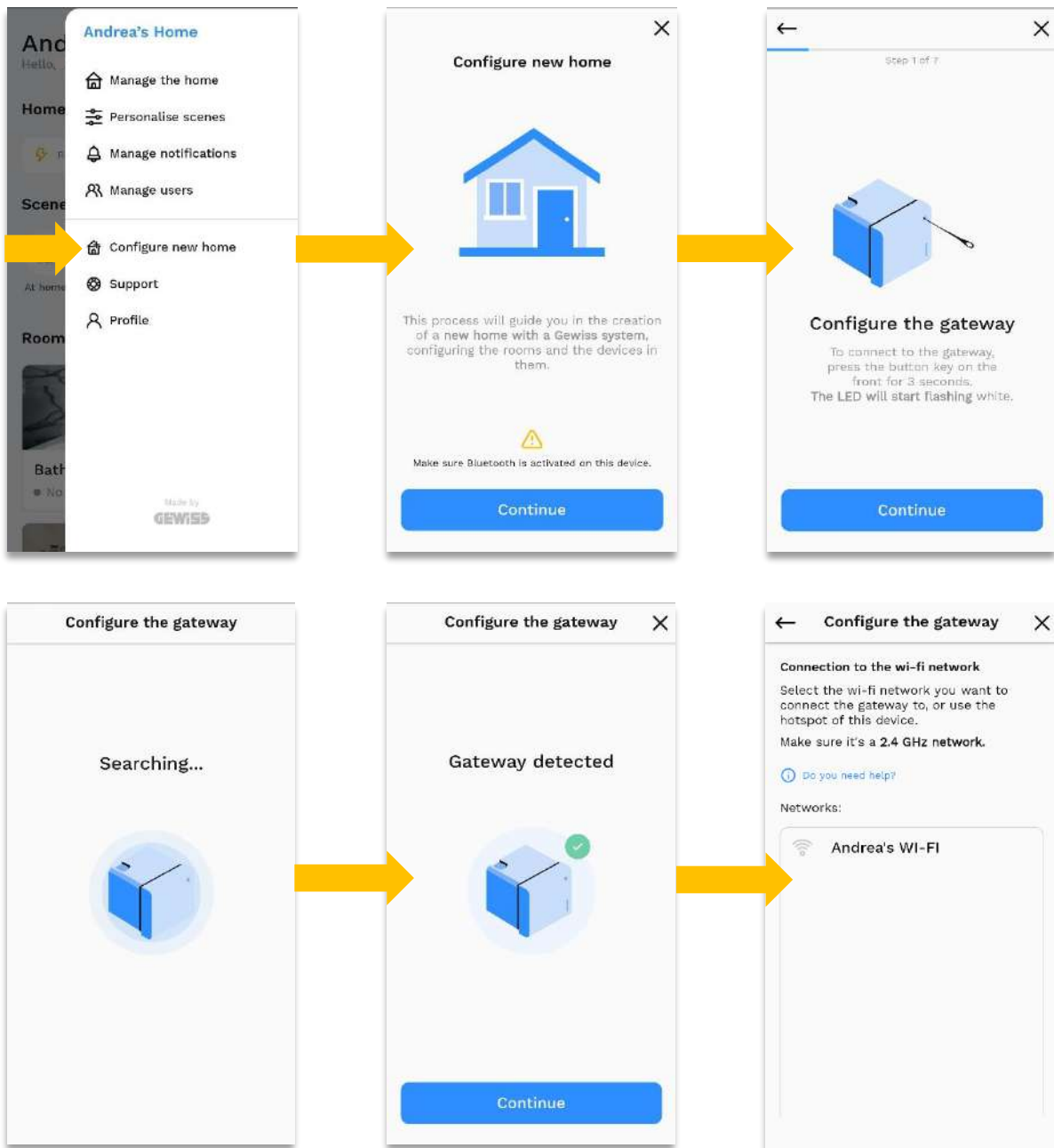
The side section will show the list with the selectable implants in alphabetical order. Once you have passed the fifth implant, you will be able to set favourites as well as sort the list at will with a simple drag and drop.

Once this is done, one can return to the home to manage one's devices directly from the dashboard, run scenarios such as *"I'm going out"* or perform the *commissioning* procedure to set up a new home.

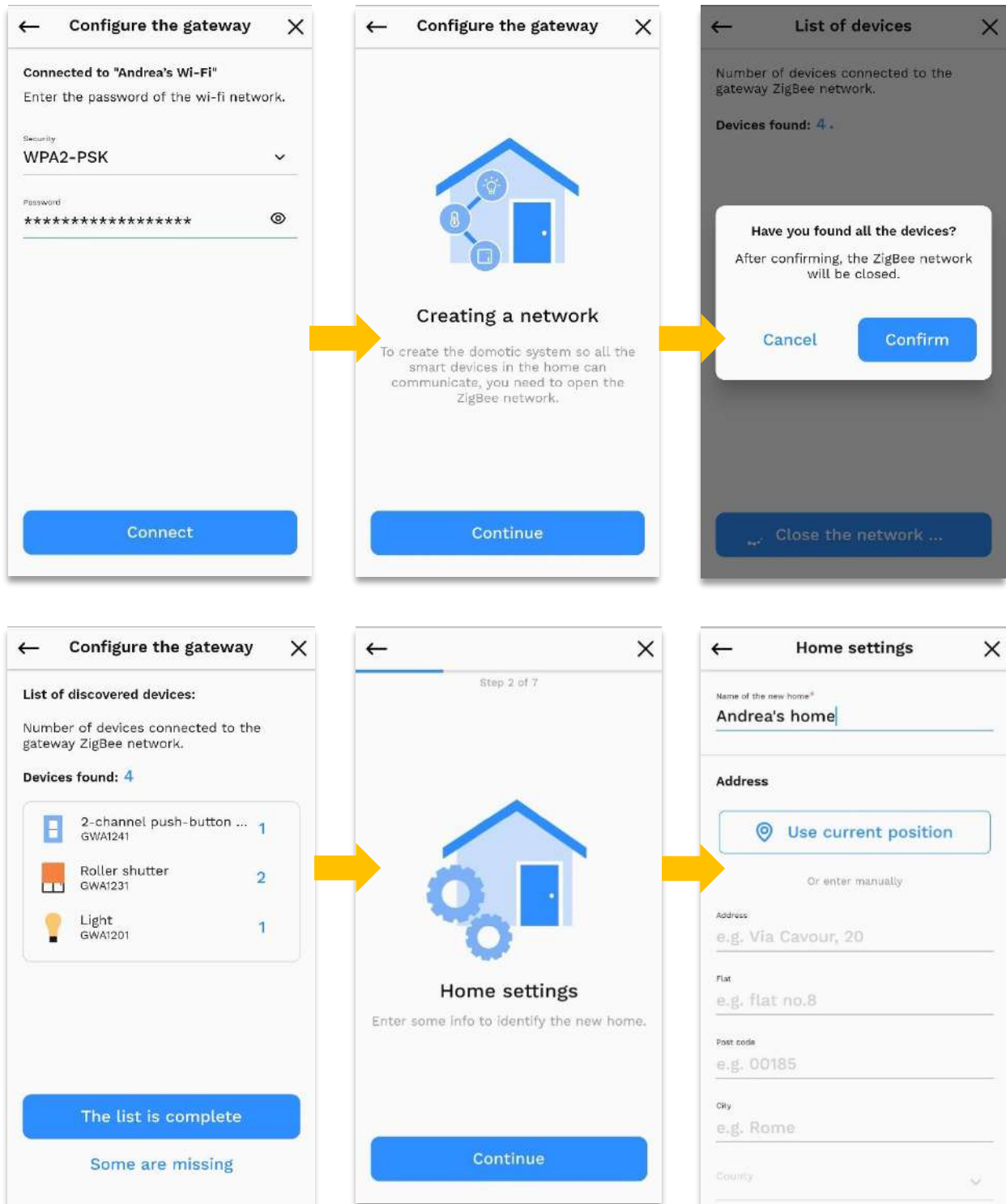
5. APP MENU DESCRIPTION

5.1. SETTING UP A NEW HOME (CREATE NEW PLANT)

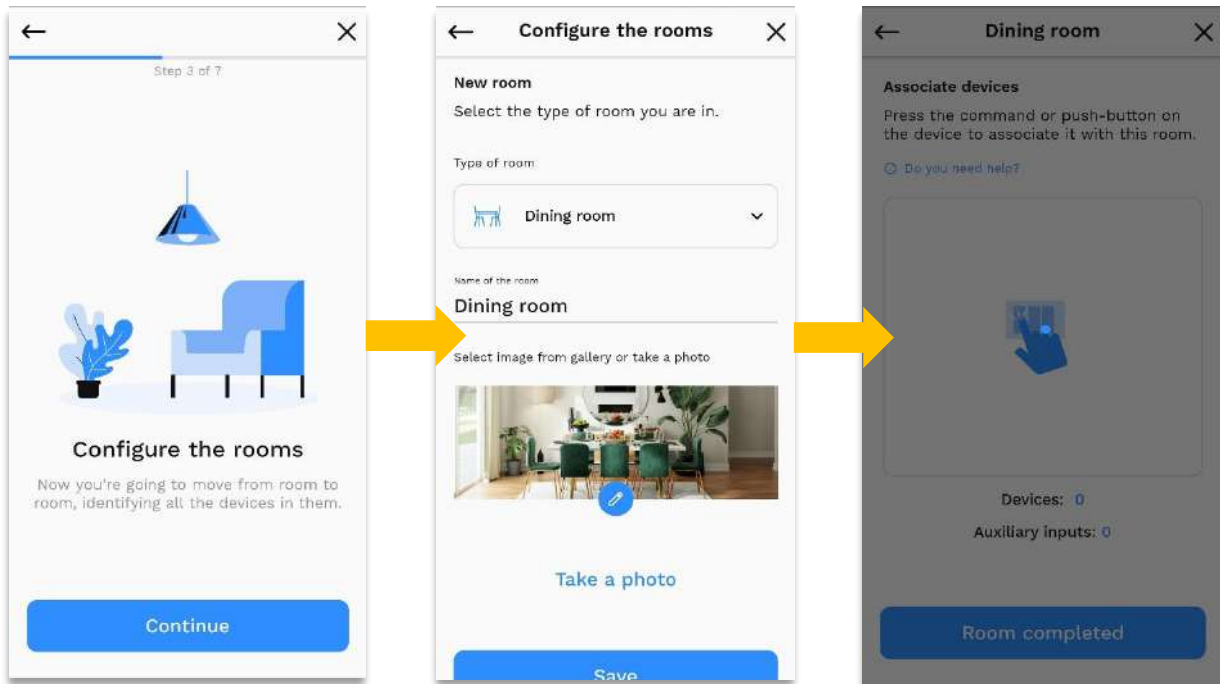
To create a new plant, from the main menu, select the “Configure New Home” item, the App will guide you through all operations such as opening the Zigbee network, searching for devices, configuring Smart Plates, etc. Please notice: before proceeding with configuration, read [note](#) (page 15) on setting up a network.



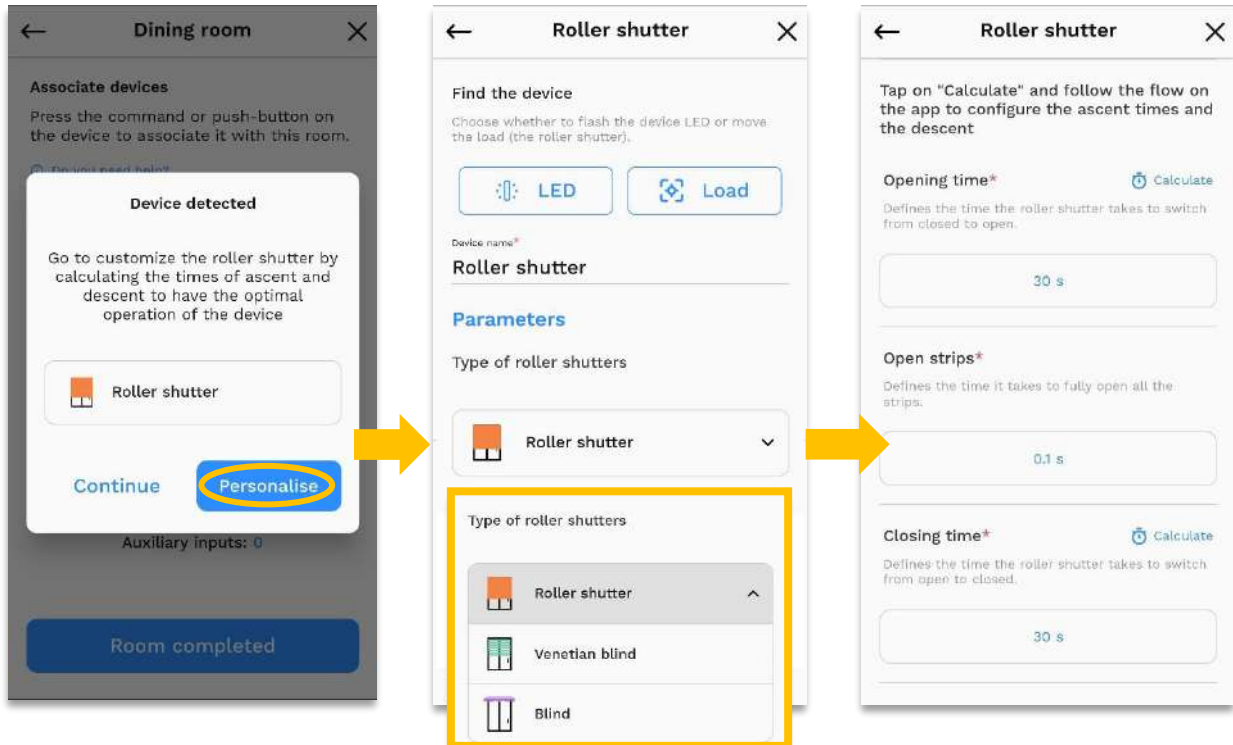
CHORUS SMART

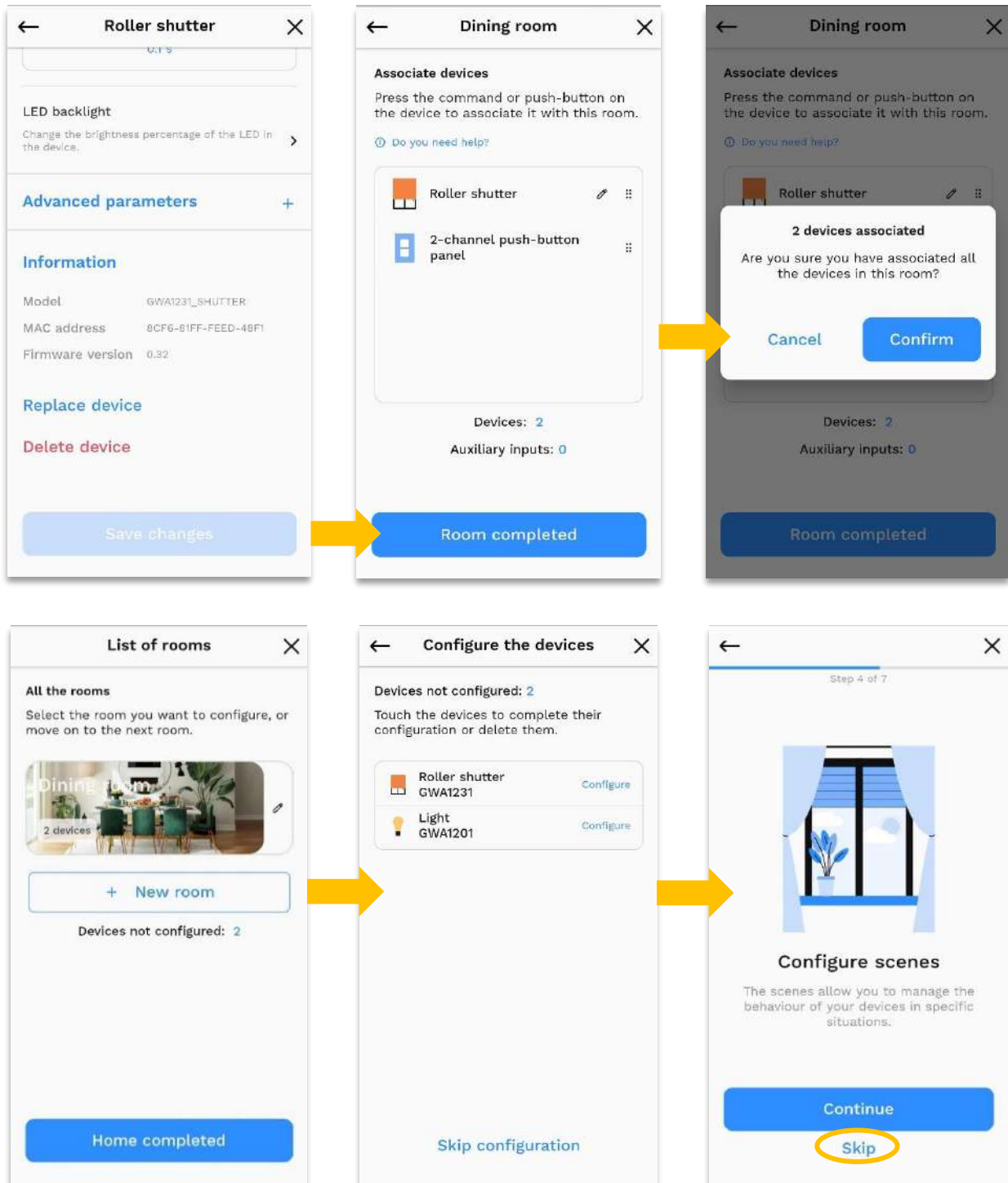


CHORUS SMART

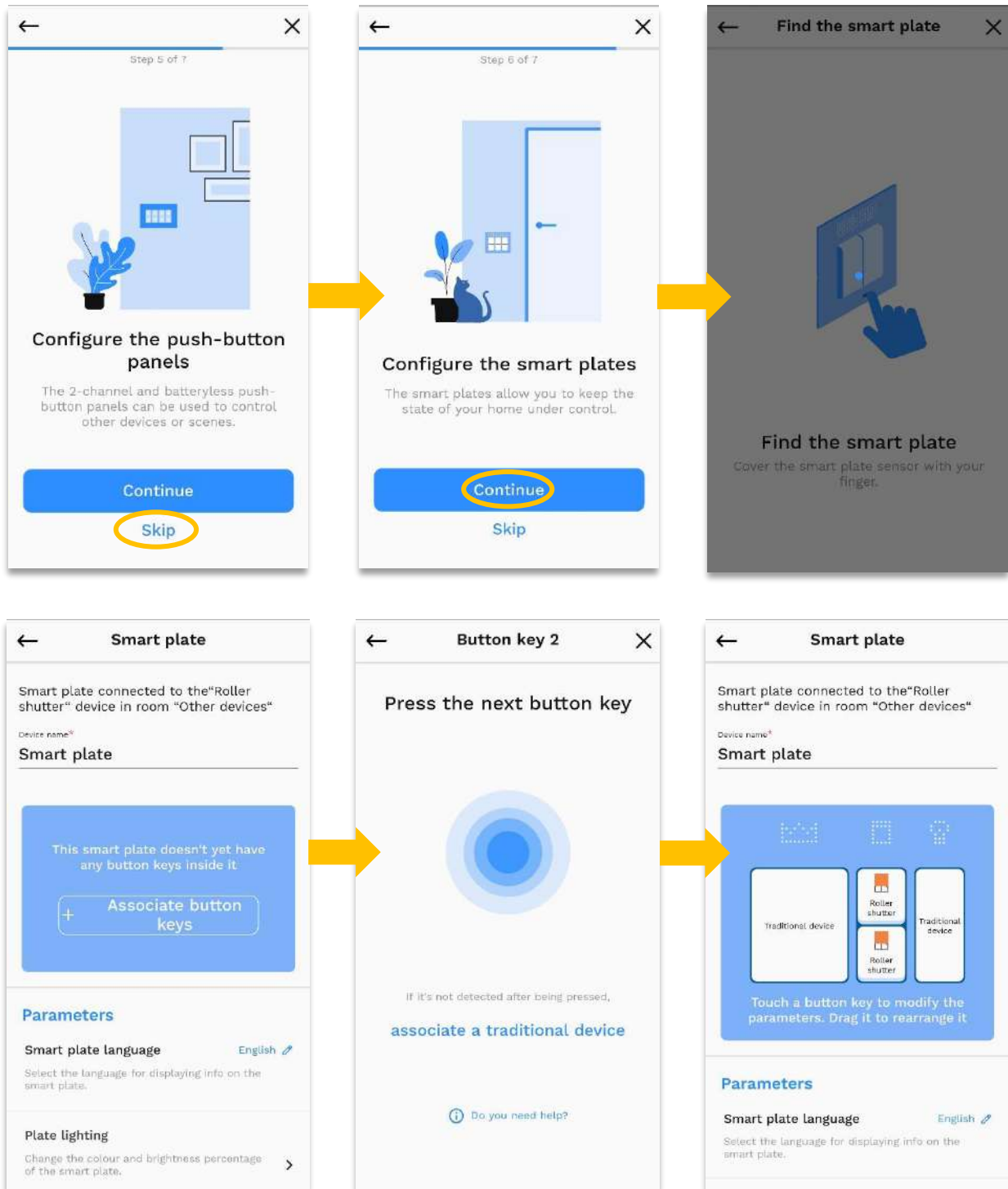


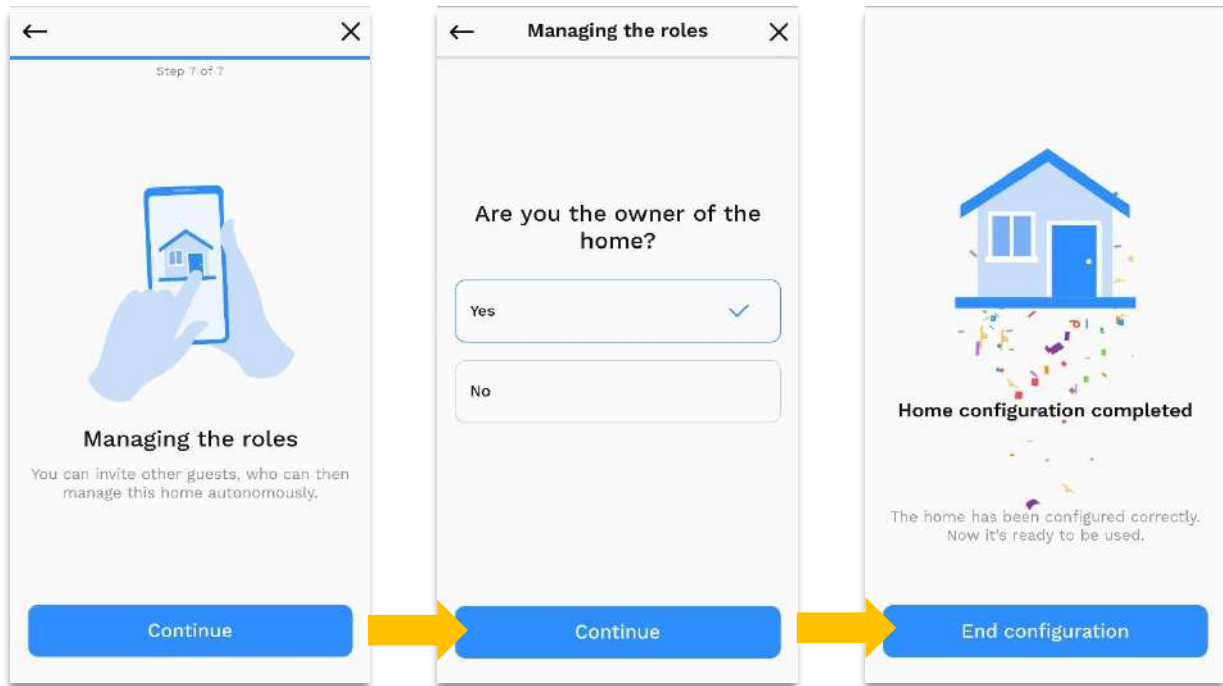
Here you will need to press the connected devices and/or any auxiliary inputs (the latter can also be added later) that you would like to include in the room configuration. You can always decide to customise the settings for each device or choose to do it later.





CHORUS SMART





For other features go to the menu and access all customizations such as alert management, smart plates, gateways, upgrades, and more. The interface of the App is such that it is intuitive to add new devices in the system by simply clicking on "Add device," as shown below. As for updates, some can be forced. As soon as the gateway connects to the WiFi network, if necessary, the device will be prompted for an update lasting about two minutes, and then it will reboot. After that is complete, you will be able to continue the system configuration by creating the Zigbee network.

Note on creating a network: before opening the Zigbee network, be sure:

- All the smart devices are in the factory configuration (steady red LED);
- If they are not, perform a factory reset (see instruction sheet).

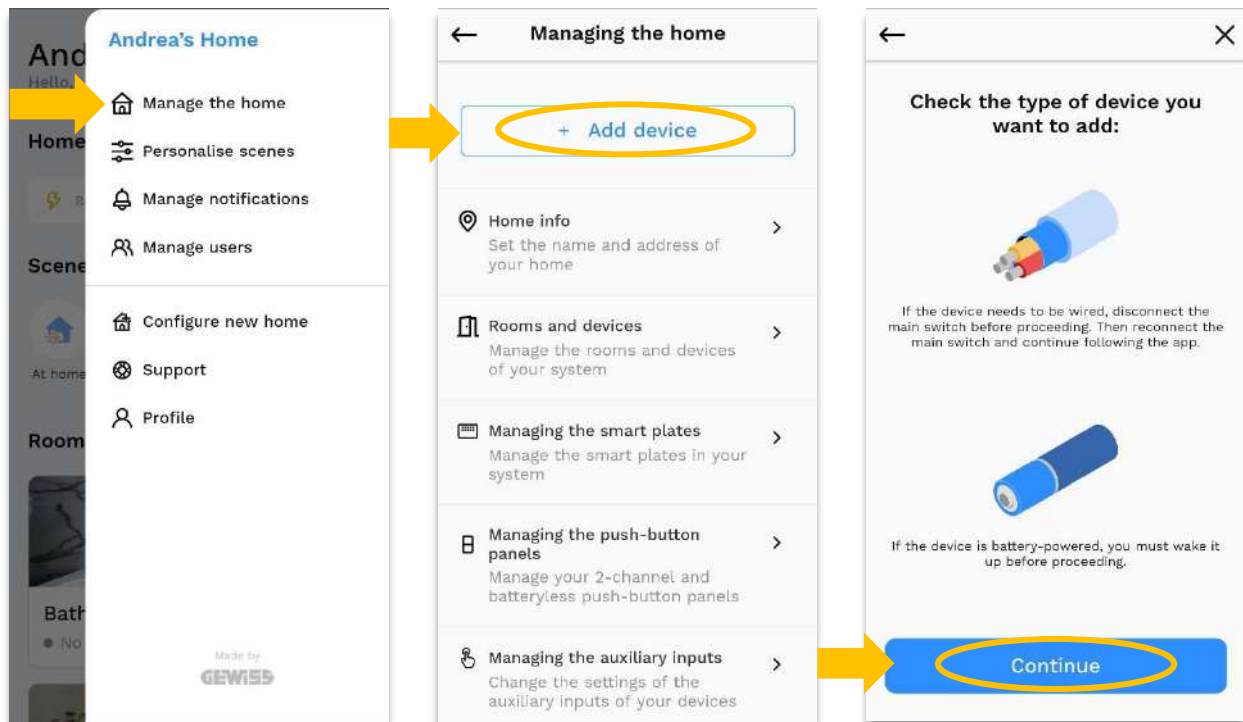
Once the Zigbee network has been opened, the App will progressively show the number of devices acquired in the network. Devices acquired in the network will have their LEDs lit blue. The devices' LEDs will change from red (not connected to any network) to blue (connected to a Zigbee network) and then almost immediately to green to indicate that the network they are connected to is open.

After the network has been created, you can proceed to configure the house and the devices until the last step, which allows you to manage all the users in the system (for details, please refer to [section 5.5](#), 'User Management', of this document).

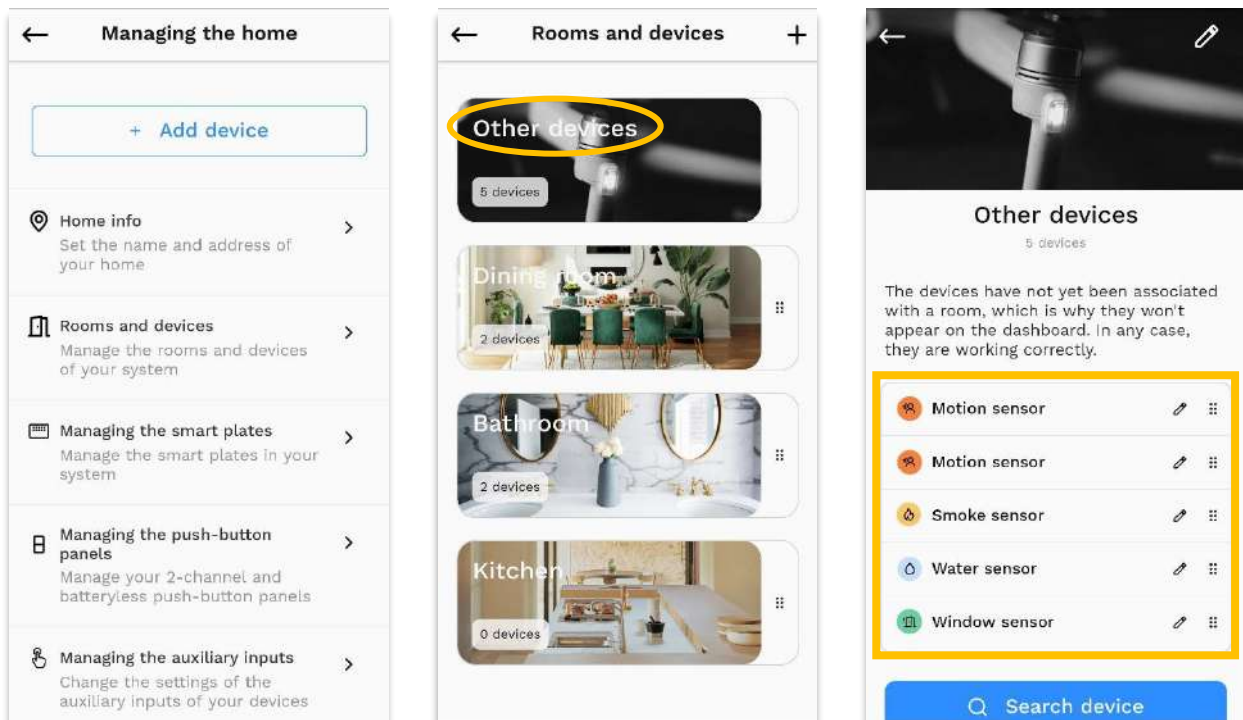
5.2. HOME MANAGEMENT (ADDING DEVICES)

From the main menu, go to "Manage the home", then to "Add devices" and click on the 'Continue' button to follow the wizard:

CHORUS SMART



In “Rooms and devices”, on the other hand, it will be possible to manage not only the rooms and their devices, but also all those devices present in the system but not yet associated with a particular room because they belong to a specific type e.g. sensors:

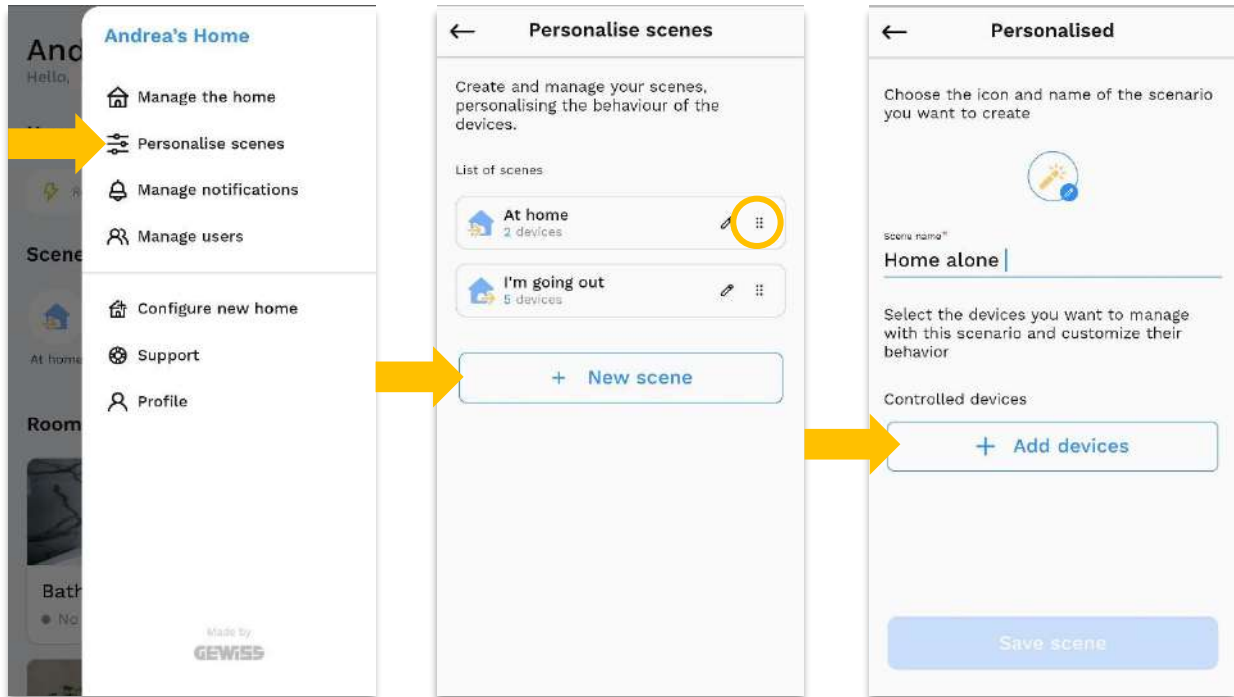


Please note. In the case of battery-operated devices, it will be necessary to add them one at a time for correct configuration.

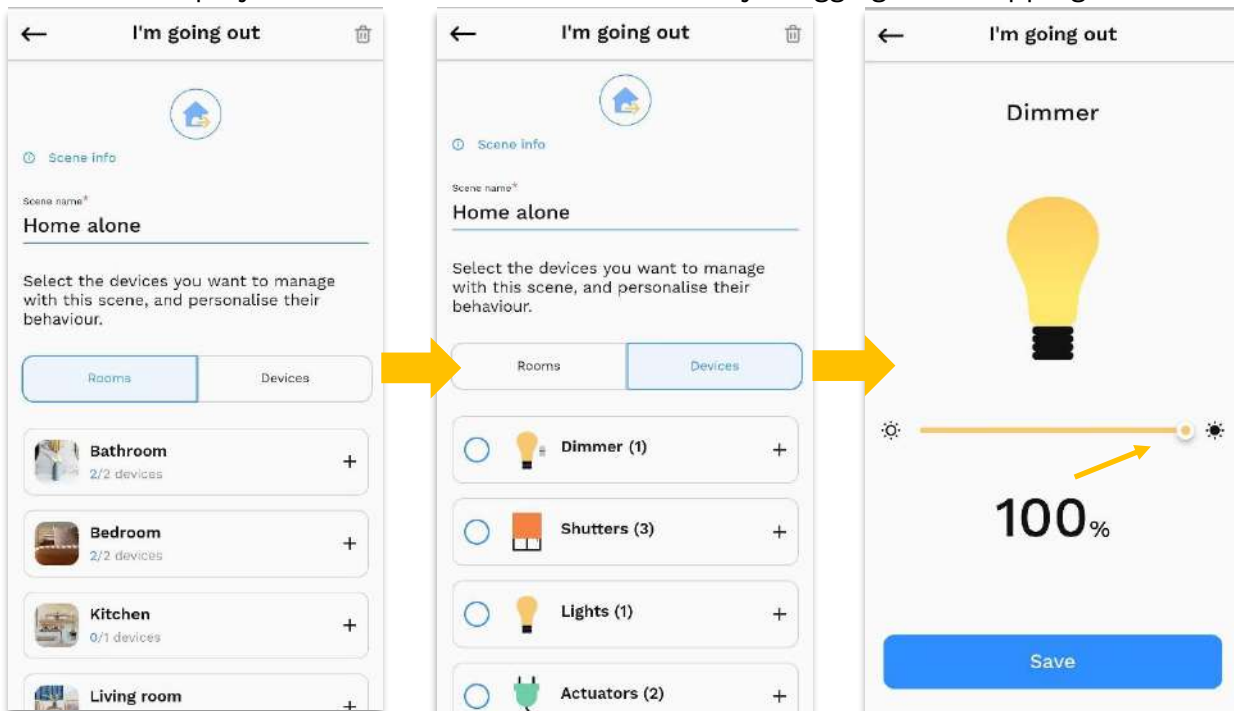
CHORUS SMART

5.3. CUSTOMISING SCENES

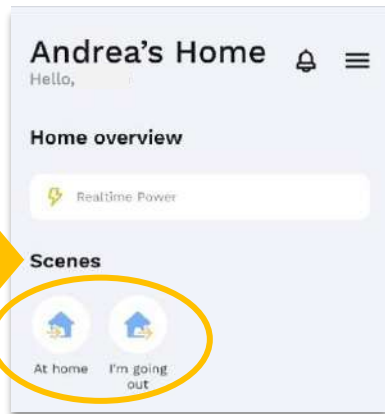
From the dedicated menu item, select the button to create a new scene and follow the suggestions displayed in the App, including the part on devices to be associated:



The list of displayed scenarios can also be sorted by dragging and dropping.



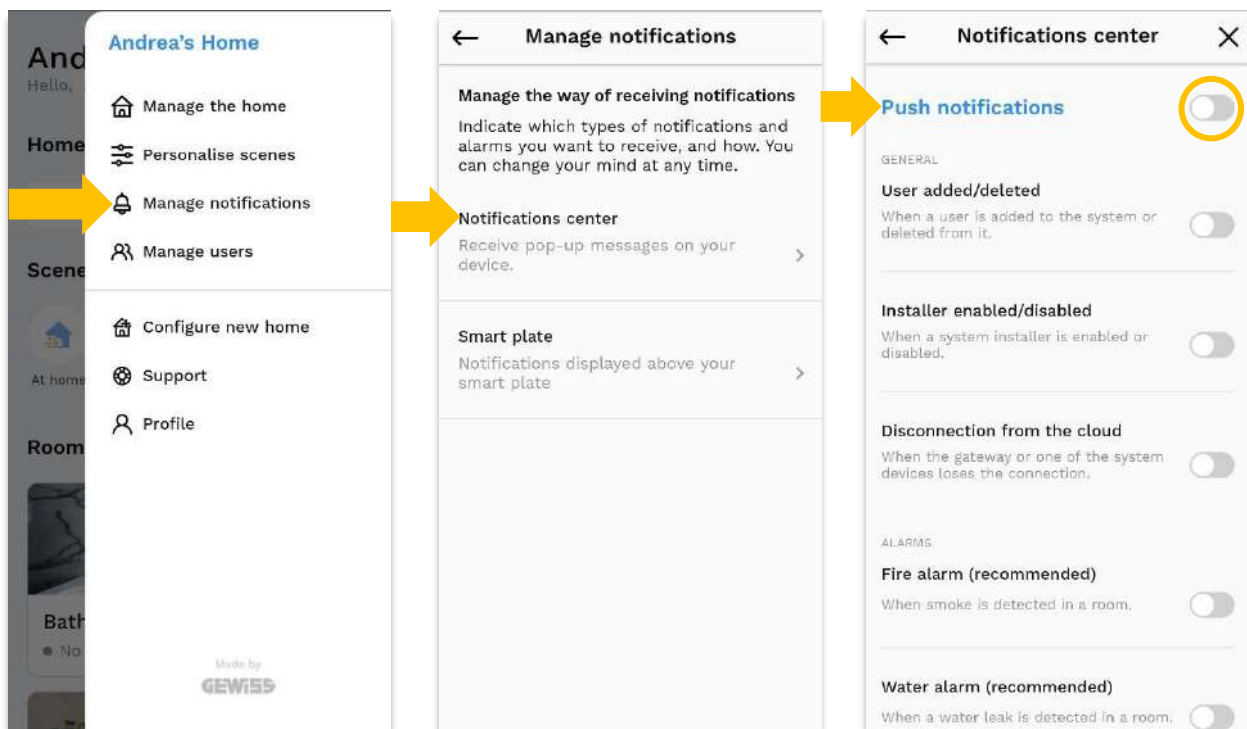
CHORUS SMART



At the end of the procedure, return to the App's dashboard and select one of the created scenes to activate it.

5.4. NOTICE MANAGEMENT

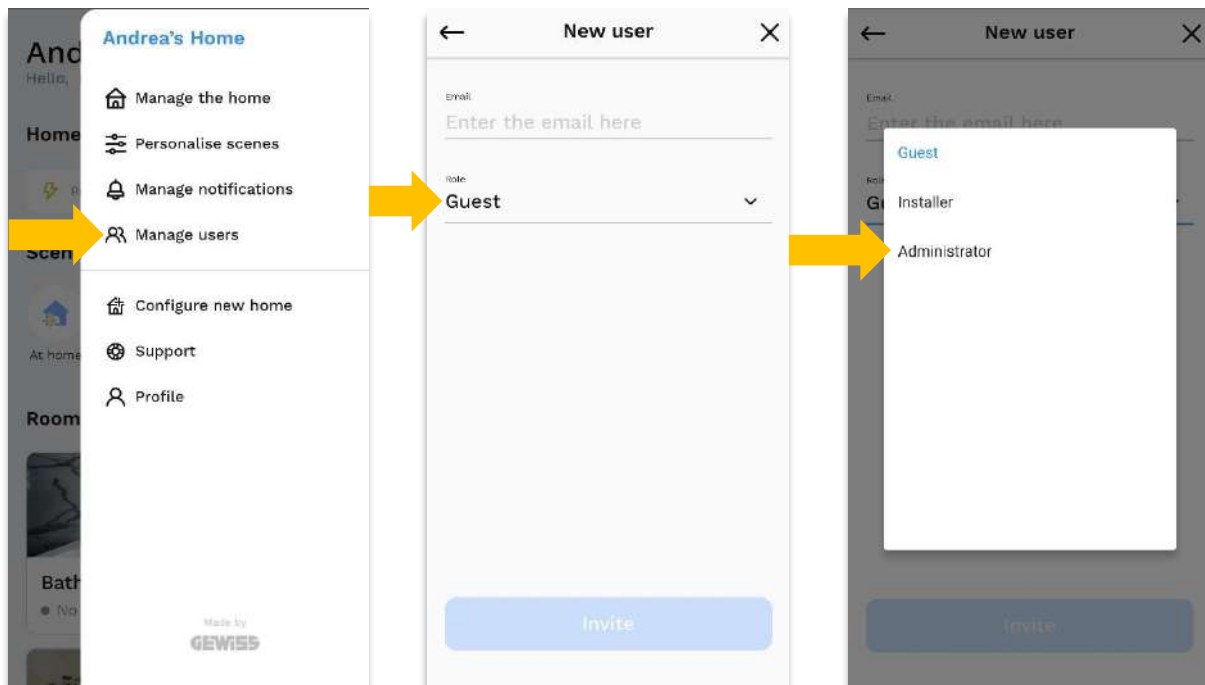
From this section it is possible to configure the reception of alerts on the notification centre of the phone or directly on the EGO Smart plates in the system.



5.5. USERS MANAGEMENT

Under “Manage users” you can choose among: guest, installer and administrator. Each of these three profiles has its own range and limits in managing the system:

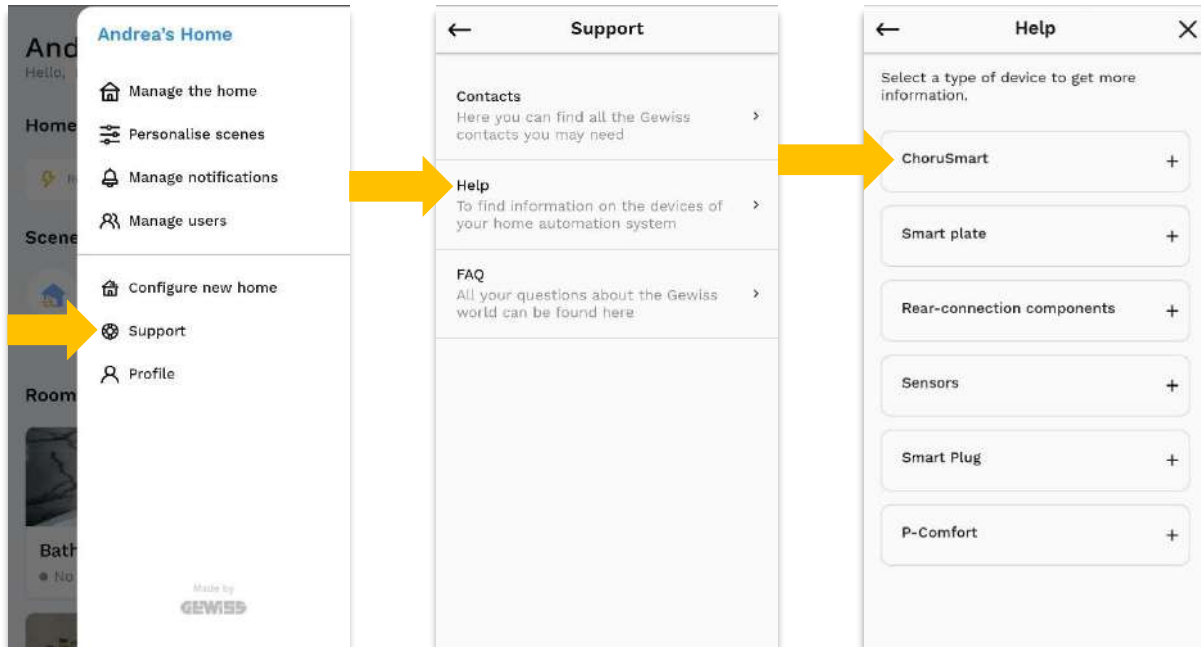
- The Administrator is able to command and configure the system; once the initial configuration phase of the system is completed, Administrator-type users have the ability to enable and disable *Installer* users.
- Installer is able to command and configure the system; once the initial configuration phase of the system is completed and ownership of the system is transferred to at least one Administrator-type user, Installer users can access the system only if they are enabled.
- The Guest can control the system but does not have the ability to change the configuration.



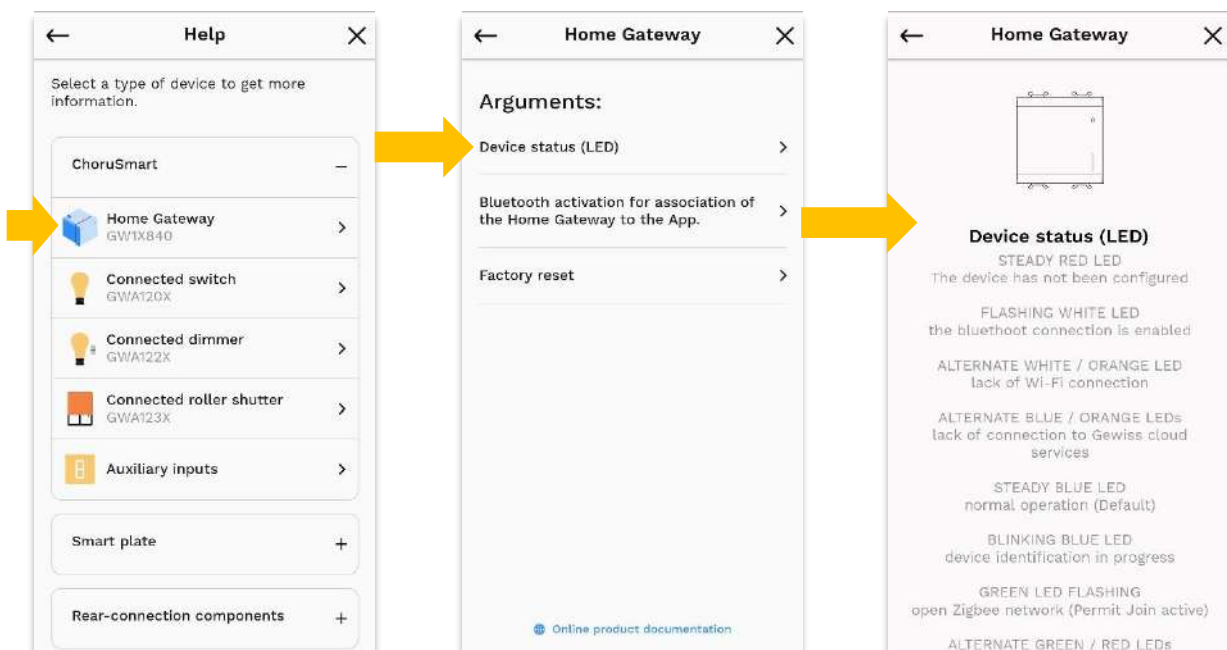
6. ISSUES AND RESOLUTION

6.1. USING ONLINE HELP

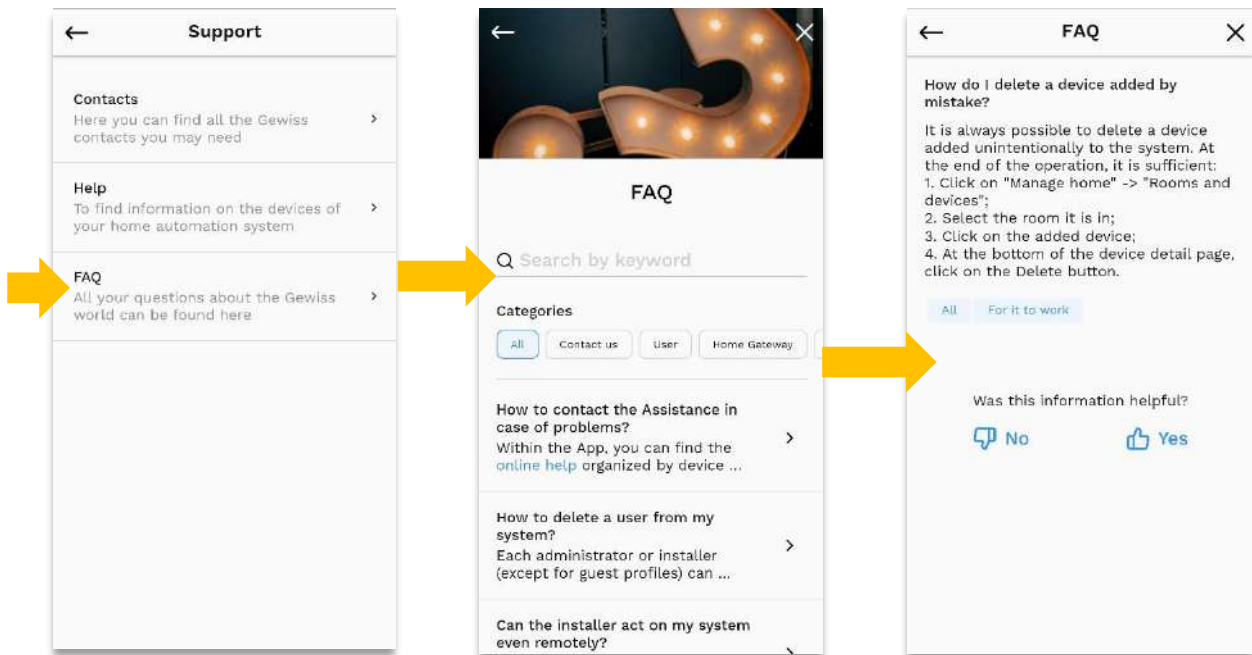
In case of unforeseen problems, use the “Help” from the “Support” menu item:



The system will guide you in identifying the device and the information you need to resolve the problem encountered as shown below:



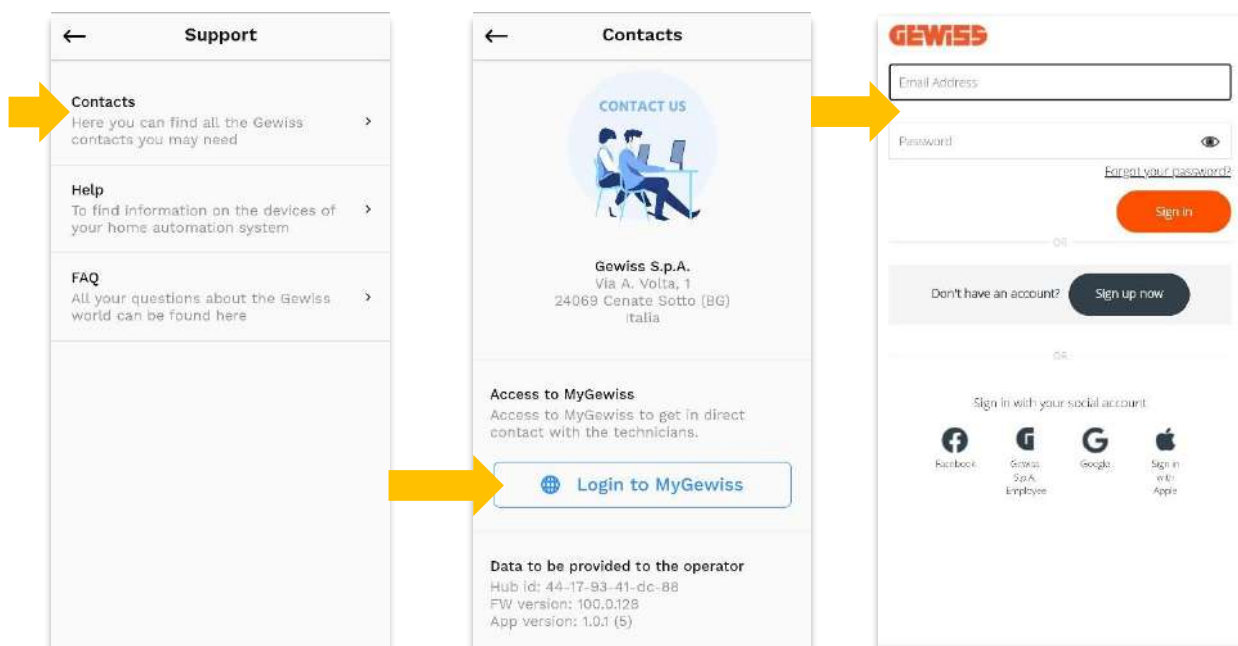
Should the information in the online Help not be sufficient to resolve any errors encountered independently, it will be possible to consult the FAQs:



At the end, you can request the support of the GSS, *Global Service & After Sales GEWISS*, directly from the App, by accessing the MyGewiss section (as indicated in the following paragraph).

6.2. REQUEST FOR TECHNICAL SUPPORT

To request support from GSS, it is necessary to access the *MyGewiss* section by entering the menu under Support and from there click on Contact Us, after which it will be possible to request support via a special button that links to the dedicated page:



Punto di contatto indicato in adempimento ai fini delle direttive e regolamenti UE applicabili:
Contact details according to the relevant European Directives and Regulations:
GEWISS S.p.A. Via A.Volta, 1 IT-24069 Cenate Sotto (BG) Italy
tel: +39 035 946 111 E-mail: qualitymarks@gewiss.com

According to applicable UK regulations, the company responsible for placing the goods in UK market is: **GEWISS UK LTD - Unity House, Compass Point Business Park, 9 Stocks Bridge Way, ST IVES Cambridgeshire, PE27 5JL, United Kingdom**
tel: +44 1954 712757 E-mail: gewiss-uk@gewiss.com



+39 035 946 11
8:30 - 12:30 / 14:00 - 18:00
lunedì - venerdì / monday - friday



www.gewiss.com

